

The top of the page features a dark background with a network of white lines and nodes. Various industrial icons are scattered throughout, including a factory with smokestacks, a chemical flask, a crane, and a storage tank. The logo for 'converge' is in a white, lowercase, sans-serif font, with a white circle of nodes around it. To the right of the logo, the words 'CONNECTIVITY MANAGER' are written in a smaller, uppercase, sans-serif font.

**converge**

**CONNECTIVITY  
MANAGER**

## The simplest, most cost-effective connectivity tool. Period.

### Converge is all you need.

When it comes to managing your assets, understanding relationships is key. You need to visualize how each asset is connected, and how those connections impact each asset and the surrounding environment. Once you have this valuable insight, you can use it to make critical operational decisions.

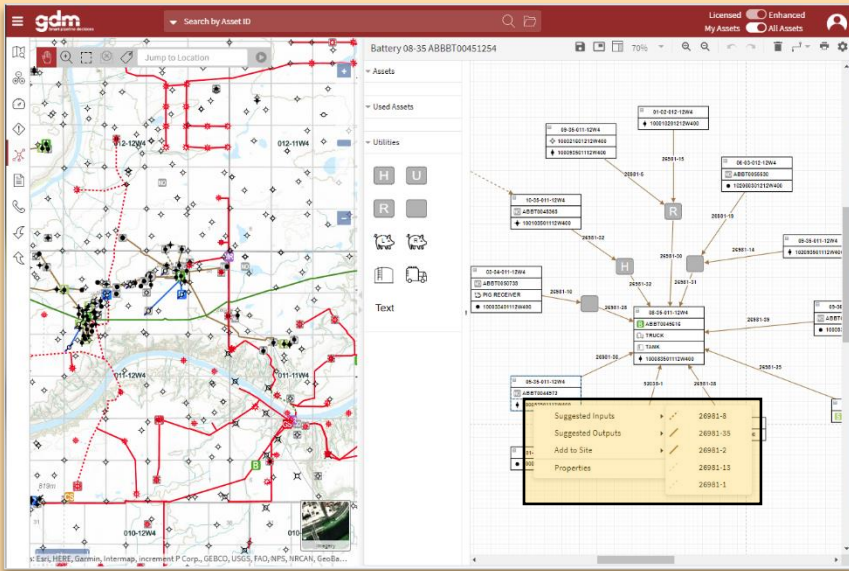
Using a simple drag-and-drop interface, you can build, save and edit complex systems. Because it is built using GDM's industry-leading data, you always have access to the most up-to-date asset information.

Asset status and substance changes are also automatically updated as amendments occur, so your diagrams remain current without the need for constant monitoring.

Converge Connectivity Manager makes it easy to identify connections and create system diagrams that give you a holistic understanding of your network.

### Why choose Converge Connectivity Manager?

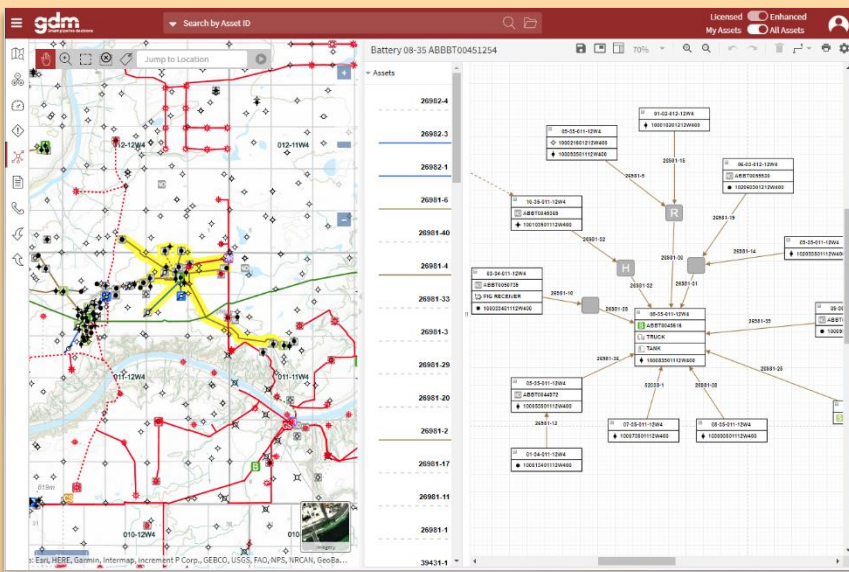
- Create system diagrams with little to no training required
- Speed up diagram creation using our proprietary Network Suggestion tool
- Include 3<sup>rd</sup> party assets in diagrams for a complete picture of your network
- Add elements such as pig launchers and receivers, tie-in points, storage tanks and trucks to your system diagrams
- Save, share and print your diagrams with other members of your team or organization



## Cost-Effective, Simplified Connectivity

Converge Connectivity Manager is available as an add-on module to Converge. Any user in your company can view diagrams, and designated users are able to create, edit or delete diagrams.

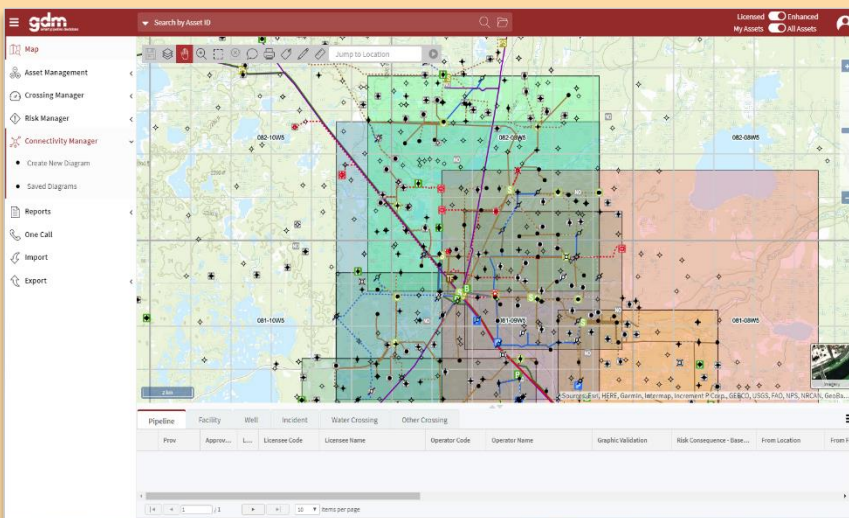
It is the only connectivity solution on the market that includes our proprietary Network Suggestion tool to intuitively identify what assets may be inputs or outputs for a selected asset. You will be presented with a list of assets which are likely connected...just select any or all that apply, and they will be automatically added to your diagram, allowing you to quickly and accurately create system diagrams.



## Intuitive, Drag-and-Drop Interface

Converge Connectivity Manager is the easiest-to-use connectivity tool available. Simply select a group of assets from the map and drag them on to the canvas to create your system diagram. Assets can easily be moved around to position them exactly where you want them.

System diagrams can include both your assets, and 3<sup>rd</sup> party assets, for a complete picture of your integrated systems. Diagrams remain proprietary to the company that created them, so you can be confident knowing your information is protected.



## Complete, Persistent Data

With data that is updated daily, you always have the most accurate and current data available to create your system diagrams. Status or substance changes are also immediately updated in the diagram, so you don't need to spend time keeping track of changes or making updates to existing diagrams.

In addition to licensed assets such as pipelines, wells, and facilities, you can also include elements such as pig launchers and receivers, headers, risers and storage tanks. You can assign attributes to each of these features and this data is saved as part of the diagram, so you always have access to it.

