



converge

TRUSTED ASSET
INTELLIGENCE

The information you need, where and when you need it.

Converge delivers.

Where are assets located? Who owns them? What is their current status? It should be simple, but it can be a struggle to answer these questions.

Converge makes it easy.

Converge Asset Intelligence solution was designed to help you manage, maintain and retrieve information related to your oil and gas assets. Architected on GDM Pipeline's industry leading data, Converge delivers the most accurate, complete and current oil and gas asset information for all of Canada, including a complete inventory of unlicensed pipelines in Saskatchewan. This data is combined with reporting and predictive analytics to help you fully understand your asset infrastructure.

The application is accessible anywhere you have an internet connection. Or, you can export data and work offline if no connection is available. Its intuitive interface makes it easy to find the information you need. And, with data that is updated daily, you will always have the most up-to-date information to use for making critical decisions about your asset operations.

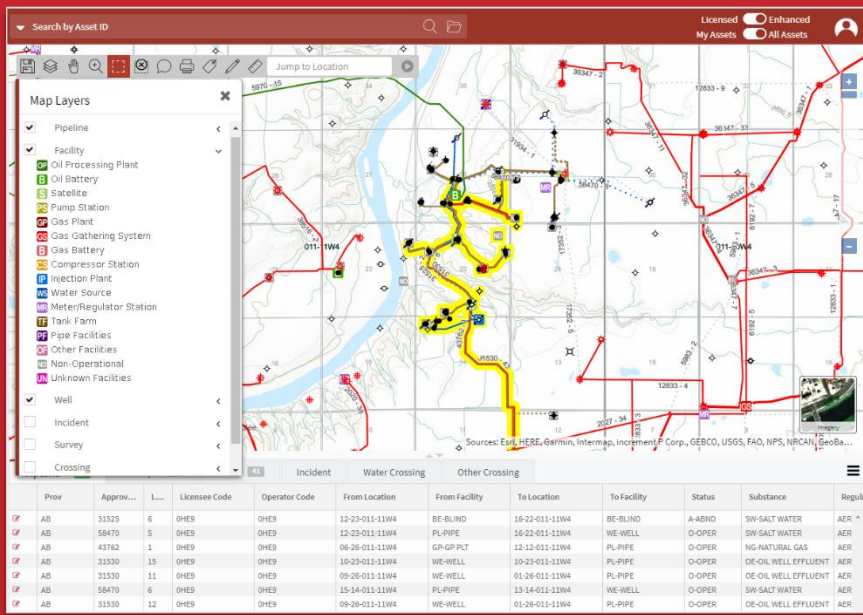
Whether you are looking for the exact location of a pipeline, searching for a complete list of your company's oil and gas assets, or looking for insight into your infrastructure to help you make critical operational decisions, look no further.

Converge will be right there when you need it.

The comprehensive tools give you the power to query your data using hundreds of available attributes and view a detailed profile for each asset.

Why choose Converge?

- View the most current information available with daily data updates
- Store and manage information about your assets in one central location
- Make data edits directly in the application and instantly view changes online
- Access regulatory documents or attach your own documents to any asset
- Gain insight into your assets with built-in reports and analytics
- Customize your view of the map using intuitive tools and filters
- Print maps in a range of sizes up to 22" x 34"
- Manage risk associated with your pipeline infrastructure and water crossings with optional modules

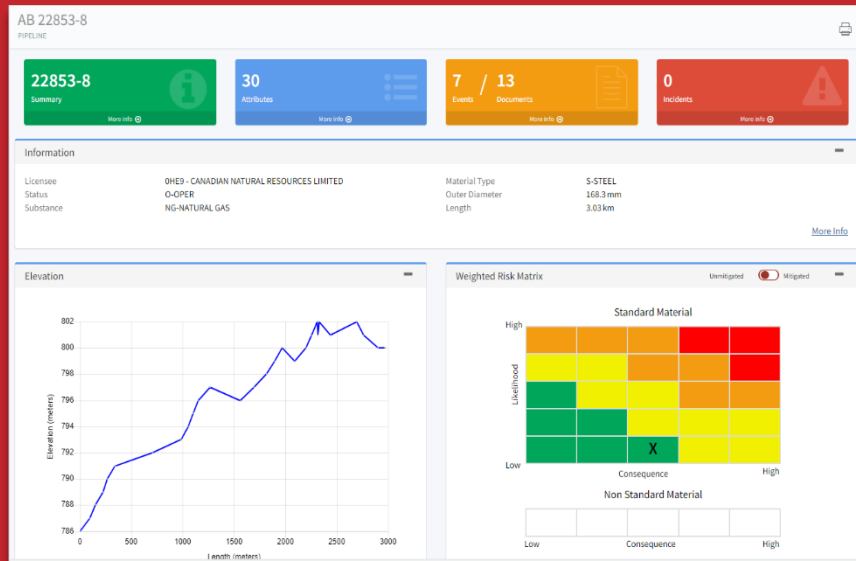


Intuitive Interface and Tools

Converge's map-based, intuitive interface lets you easily search for any asset using a variety of attributes such as License Number, Operating Status, Licensee or Location.

The map view can be customized by turning layers off or on, adding labels, toggling between topographic and imagery backgrounds, or filtering the view to see only your assets. You can also switch between a Licensed or Enhanced view of data.

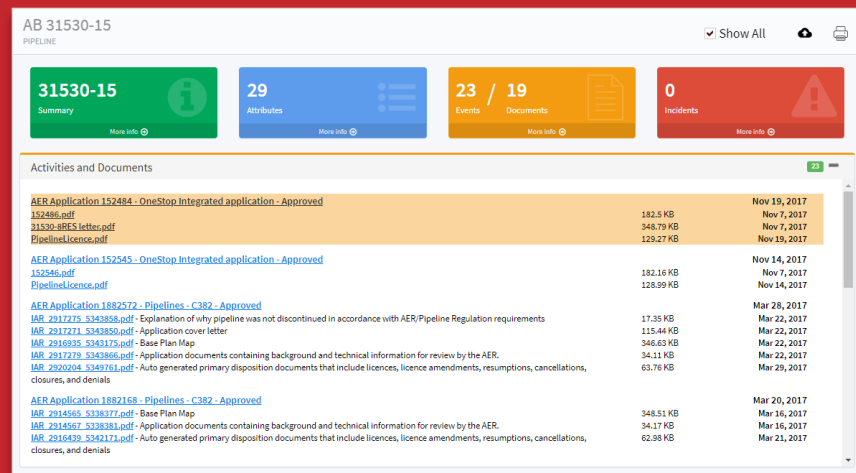
Common map features such as printing, annotations and distance measurement tools are also accessible from the main map toolbar.



Comprehensive Asset Profiles

View a complete profile for any Pipeline, Well or Facility including a detailed list of attributes and information about any associated environmental incidents.

Pipeline summaries also include an elevation profile graph, as well as risk profiles and a summary of pipeline water crossings for each asset (Risk Manager and Crossing Manager subscriptions required).



Instant Access to Documents

Documents associated to assets are available for download, including records for every licensed pipeline in Saskatchewan.

You can also attach your own documents to any asset and easily retrieve them for future reference.