

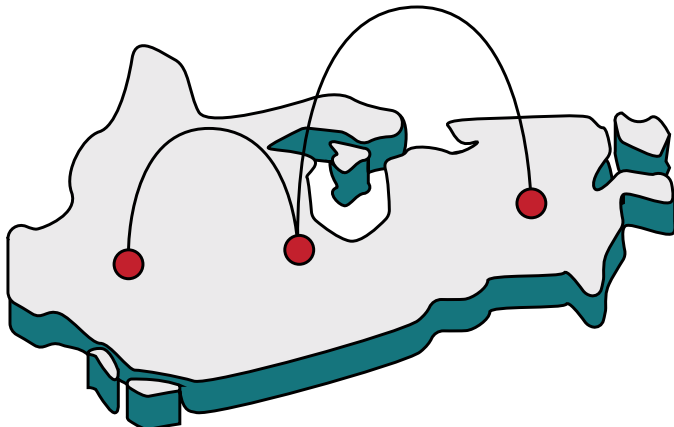


Your go-to source for oil and gas infrastructure data in Canada.

GDM delivers accurate, complete, and current oil and gas data solutions.

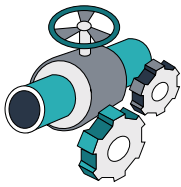
GDM has oil and gas data for every province in Canada, as well as the Northern United States. From pipelines, to facilities, to transportation networks, everything is available from a single point of contact.

Our data solutions are carefully maintained to deliver the best information to our clients any time they need it. We review data to ensure it is accurate and complete, and we update our database daily to include the most recent industry activity, so you are always working with most up-to-date information available.



Why choose data from GDM?

- Single point of access for oil and gas data in all regulatory jurisdictions across Canada
- Asset locations have been spatially corrected and validated against survey plans
- Data includes field-validated information collected directly from operators
- Only source of unlicensed flow lines in Saskatchewan
- Most accurate, current and complete oil and data available



Pipelines

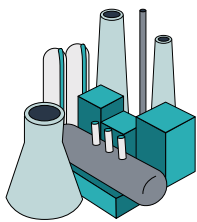
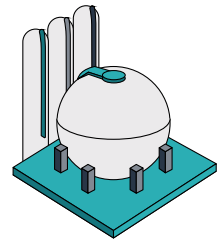
Our comprehensive pipeline data includes field-validated attributes and spatially accurate locations. With over 100 attributes, it is the most complete source of pipeline data available.

We currently maintain the only source of unlicensed pipelines in Saskatchewan. Our data also includes records for all provincial regulatory bodies and the Canadian Energy Regulator.

Upstream Facilities

Our data offers a complete record of Upstream Facilities, including Batteries, Compressors, and Gas Plants, across Western Canada and the Northern US. We have compiled information directly from government and royalty sources, in addition to operators.

Available attributes feature spatially accurate locations and operational details, including licensed capacities, ownership history, and production volumes.



Downstream and Industrial Facilities

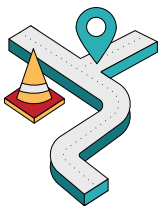
Our Downstream and Industrial Facility data includes all major infrastructure that plays a critical role in the North American energy supply chain. We have compiled information on both refineries, and large energy consuming facilities, including Power Generation, Manufacturing, and Mineral Extraction.

Emissions information, such as CO₂, is included to help industry stakeholders progress on their climate change commitments.

Environmental Incidents

Our Environmental Incident data includes current and historical environmental incidents associated to pipelines, wells, and facilities.

Details include the type of incident, product and volume released, location, cause type and damage type.



Transportation Infrastructure

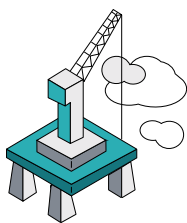
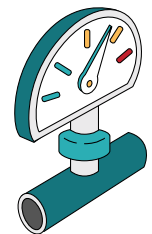
Our Transportation data combines public roads with resource roads licensed by the energy, forestry, mining, and recreational industries to deliver a comprehensive and spatially accurate collection of road information.

Attributes include road ownership and names, topologically correct roads, and connectivity to well sites and facilities.

Utilities

Our Low-Pressure Gas Utility data includes all low-pressure distribution pipelines in Alberta, outside of major cities and First Nation Reserves.

Information contained in the database includes the spatial location of distribution lines, operator, status, as well as outside diameter and pipeline material information where available.



Frontier Land

The GDM Frontier Land Database is the most comprehensive and detailed source of active mineral lease data available for areas in Canada outside the Western Canadian Sedimentary Basin.

